



DECCA IMPIANTI



CONVEYOR BELT FEEDERS "AN" SERIES

FOR THE FEEDING AND THE EXTRACTION

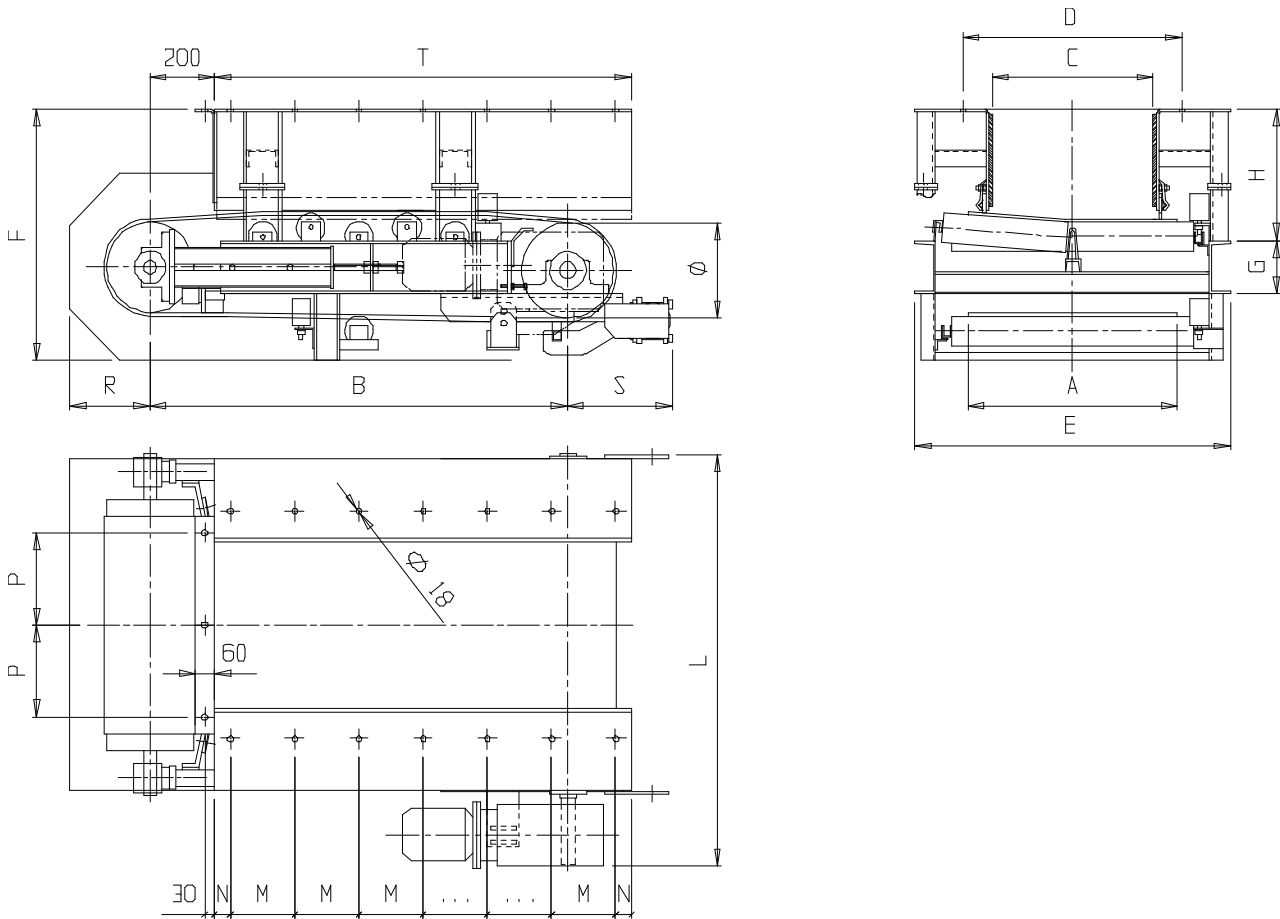


- Suitable for the extraction from hoppers
- Simple, robust and reliable
- Continuous and regular material feeding



Conveyor Belt Feeders "AN" series

The material is transported on a heavy duty belt operated slowly. It is possible the application of a layer sensor to report the presence or absence of material on the belt.



TYPE	A (mm)	B (mm)	C (mm)	D (mm)	E (mm)	F (mm)	G (mm)	H (mm)	L (mm)	M x No. of Holes (mm)	N (mm)	P (mm)	R (mm)	S (mm)	T (mm)	Ø (mm)	Max. capacity (mc/h)	Power (Kw)	Weight (Kg)
AN 65/130 - 0,7	650	1300	520	680	980	750	160	390	1230	200x6	50	275	250	330	1300	330	70	0,75	500
AN 65/130 - 1	650	1300	520	680	980	750	160	390	1230	200x6	50	275	250	330	1300	330	100	1,1	510
AN 80/160 - 1	800	1600	640	800	1200	750	160	390	1450	200x7	100	300	250	330	1600	330	100	1,1	750
AN 80/160 - 2	800	1600	640	800	1200	750	160	390	1450	200x7	100	300	250	330	1600	330	140	1,5	760
AN 100/200 - 2	1000	2000	800	960	1400	800	200	420	1700	200x9	100	350	250	330	2000	330	130	2,2	1170
AN 100/200 - 3	1000	2000	800	960	1400	800	200	420	1700	200x9	100	350	250	330	2000	330	180	3,0	1190
AN 120/240 - 3	1200	2400	960	1120	1650	850	200	420	1950	200x11	100	400	300	330	2400	330	160	3,0	1690
AN 120/240 - 4	1200	2400	960	1120	1650	850	200	420	1950	200x11	100	400	300	330	2400	330	220	4,0	1710

These technical data are not binding

These models are standards that can be adapted and modified according to specific project requirements.